

## Local variations in NHS spending priorities

While the 'postcode lottery' of accessing drugs such as Herceptin on the NHS attract media headlines, there has been growing awareness of more fundamental variations in spending by primary care trusts (PCTs), the organisations responsible for purchasing the bulk of NHS care for people living in their catchment areas. This briefing builds on this by analysing newly-available data collected by the Department of Health on the amount PCTs in England spend on specific disease areas. It reveals that there are differences in spending per head that only appear to be partially explained by the different needs of their local populations, leaving unanswered questions about why PCTs reach different decisions about their spending priorities and whether spending variations have adverse effects on equity and efficiency.

### Background

PCTs are in charge of spending around 80 per cent of the NHS budget in England (around £58 billion), yet until very recently there has been little systematic data available on how they divide up their budgets between services for different diseases.

Thanks to the National Programme Budget Project (NPBP)<sup>1</sup> launched by the Department of Health in 2002, PCTs have been collecting information on how much they spend on disease areas, rather than just recording how much was spent on primary care staff and salaries, drugs or different types and amounts of hospital procedures.

First used by the US Department of Defense in the 1960s, programme budgeting examines how much is being spent on particular programmes or objectives, rather than on categories such as staff or facilities. This type of information makes it easier to identify how money is being used and whether it is being spent in accordance with policy objectives.

As part of the NPBP, PCTs have collected data since 2003 on expenditure on 21 different disease areas. This is the first time such information has been made available in this form. It is designed to enable the government to evaluate how NHS money is being spent and whether the current allocation is in line with policy priorities. It should also allow PCTs to compare their spending patterns and to question whether they are putting their available funds to the best possible use.

The Department of Health is currently investigating the extent to which variations in PCT spending are reflected in population health and other outcomes – so making the link between the financial

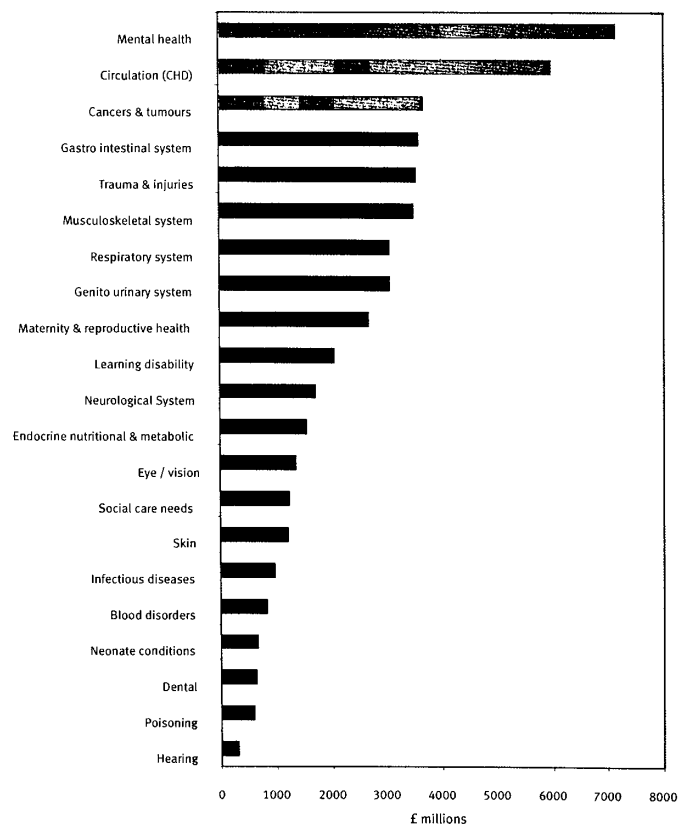
inputs to the NHS and the health outcomes. For example, do high spending PCTs achieve more in terms of reduced mortality for their populations?

The latest data covers the financial years 2003/04 and 2004/05. This briefing provides some initial analysis of the data collected so far, revealing differences in total spending by disease areas and, importantly, variations across disease areas by PCT.

### National spending on different diseases

Analysis of the total amount spent on different diseases by PCTs provides a top-level view of the way in which the majority of the NHS budget is spent – built up from the individual spending decisions of the 303 PCTs that were operating at that time (see Figure 1). In 2004/05, PCTs spent almost twice as much on mental health services (which received just over £7 billion – 11 per cent of PCT spending) compared with cancer care. In part this reflects differences in the levels of need between these programmes and in part differences in the costs of providing services. However, it also reflects implicit (and, to an extent, explicit) decisions over many years about the priorities the NHS gives to different services. The government's current three main priority areas for the NHS – cancer, heart disease and mental health (highlighted in Figure 1) - consume the largest shares of PCT spending.

FIGURE 1: TOTAL SPENDING BY PCTS ON PROGRAMMES IN 2004/5



NB: An additional category, "Other" is not included in the figure. This captures around £15.5 billion of spending out of the £58 billion for 2004/5

In addition, with programme budget data available for two years (2003/4 and 2004/5), it is possible to track where a large chunk of the extra funding for the NHS in 2004/5 was spent. Spending on the government's three main health care priorities – mental health, heart disease and cancer – were the top three largest shares of the total increases in PCT spending, accounting for 9.3 per cent, 9.2 per cent and 7.7 per cent respectively). Between 2003/4 and 2004/5 all three spending areas also slightly increased their share of total PCT spend. To that extent, therefore, government priorities are being reflected in the deployment of resources to the NHS.

### Variations in spending patterns

However, analysis of spending on individual disease areas by individual PCTs reveals very large variations in the amount spent per head of population and the proportion of each PCT budget devoted to each disease area.

So, for example, to take the two most extreme cases, Islington PCT spent seven times per head (£406) as much as Bracknell Forrest PCT (£56) on mental health services in 2004/05. Such differences are evident across England in all disease areas. Spending on cancer varies four-fold, on circulatory diseases three-fold, and on musculoskeletal problems eight-fold.

Of course, some of this difference is to be expected. PCTs spend different amounts because their budgets are designed to reflect the particular needs of their population. Islington, for example, has needs assessed to be around 40 per cent higher than the national average (the second highest in England), whereas Bracknell Forest is assessed to be 20 per cent below the average (nineteenth lowest in England).

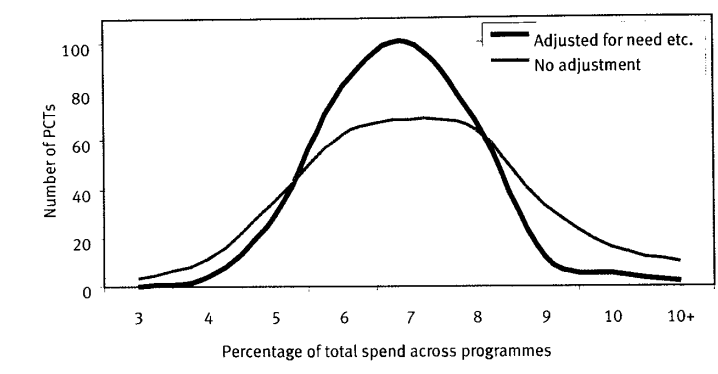
The amount of money allocated by the Department of Health to each PCT is based on a weighted capitation formula that takes into account not only the need for health care, but also PCT population size, age structure, and variations in the cost of providing services in each PCT. For example, an area with a relatively high proportion of elderly people and an above-average level of health needs will be given a greater amount of money than an area that is relatively young and has low levels of ill health. The key objective of the formula is 'to secure equal opportunity of access to healthcare for people with equal risk'.<sup>2</sup> Adjusting the money actually allocated to each area in order to comply with the formula is a gradual process: some PCTs' budgets are currently below their 'target' and some above.

A significant degree of the variation in the amount PCTs spend on different diseases can be explained by the following factors: the age and need profile of the population; the local cost of services; and any disparity between the amount of money a PCT actually receives and its target allocation under the resource allocation formula.

However, *once the effects of these are taken into account*, some stark differences remain in the amount of resources different PCTs spend on different diseases. So, in the case of mental health, adjusting for need reduces a seven-fold gap between Islington PCT and Bracknell Forest PCT to a four-fold gap (£259 and £66 respectively).

The same is true for the amount spent on cancer and tumours across England (see Figure 2). In 2004/05, without any adjustment for differences in needs and so on, there was considerable variation in the amount PCTs spent on this type of care (the orange line in the figure). When spending is adjusted for factors such as age, cost and distance from target allocations (the blue line) there is less variation, with more PCTs moving towards the average of around 7 per cent of their total spend. However, there is still a considerable amount of variation left unexplained by the adjustment. So, even after taking into account known population differences in PCTs, the proportion spent on cancer still ranges from 3 per cent to over 10 per cent of their overall budgets.

**FIGURE 2: PERCENTAGE OF TOTAL PCT PROGRAMME SPEND PER 100,000 POPULATION DEVOTED TO CANCERS AND TUMOURS: 2004/5**



Again, differences – although slightly reduced – persist across other disease areas even after adjusting for need, age and cost differences between PCTs.

#### What questions are raised by this new information?

In terms of the total amount spent by PCTs, the programme budget data provides some insight into how central government spending priorities are interpreted at local level. Broadly speaking, the government's emphasis on reducing deaths and ill health in three priority areas – cancer, coronary heart disease and mental health – do seem to be reflected locally. However, the figures might imply some further questions about the overall effectiveness of spending in certain areas. For instance in mental health, given the known deficiencies in the quality and availability of both inpatient care and psychological therapies,<sup>3</sup> does the £7 billion spend represent an under-investment or does it imply inefficiencies in the use of resources?

In terms of the variations in spending between PCTs, the working assumption behind the allocation formula has been that, once the total amount has been calculated and allocated to each PCT, the PCT's individual spending patterns would be broadly in line with local need. Indeed, it may be that each individual PCT has good reasons for spending different amounts on different disease areas, compared with the national average. However, to understand this properly, there needs to be a better understanding of the link between spending (the financial inputs) and health outcomes. It may be, for instance, that an area that spends an above-average proportion of its budget on cancer and tumours has better than average survival rates. Or it may be that the above-average spend represents a higher level of unrecognised need, which the PCT has to compensate for by spending less in another area. If this is the case, it suggests that the weighted capitation formula may be insensitive to some dimensions of need, by disease and by area. On the other hand, high-spending PCTs may, at the margin, achieve little more in terms of health benefits than lower-spending PCTs – suggesting that resources would be better spent on other programmes.

But it is important to note that PCT spending is not wholly determined by PCTs themselves. The programme budget data used here will in large part reflect the myriad individual clinical decisions that health care professionals take every day – decisions over which PCTs exercise little control. As the latest report from the Chief Medical Officer<sup>4</sup> makes clear, there are large, and largely unexplained, variations in clinical practice which, taken together, are likely to explain an as yet unquantified amount of the variation in PCT spending.

The questions raised by these data are timely, given the government's latest guidance on effective commissioning and the role of PCTs in securing maximum value for money, for patients and for tax payers.

<http://www.dh.gov.uk/PolicyAndGuidance/OrganisationPolicy/FinanceAndPlanning/ProgrammeBudgeting/fs/en>

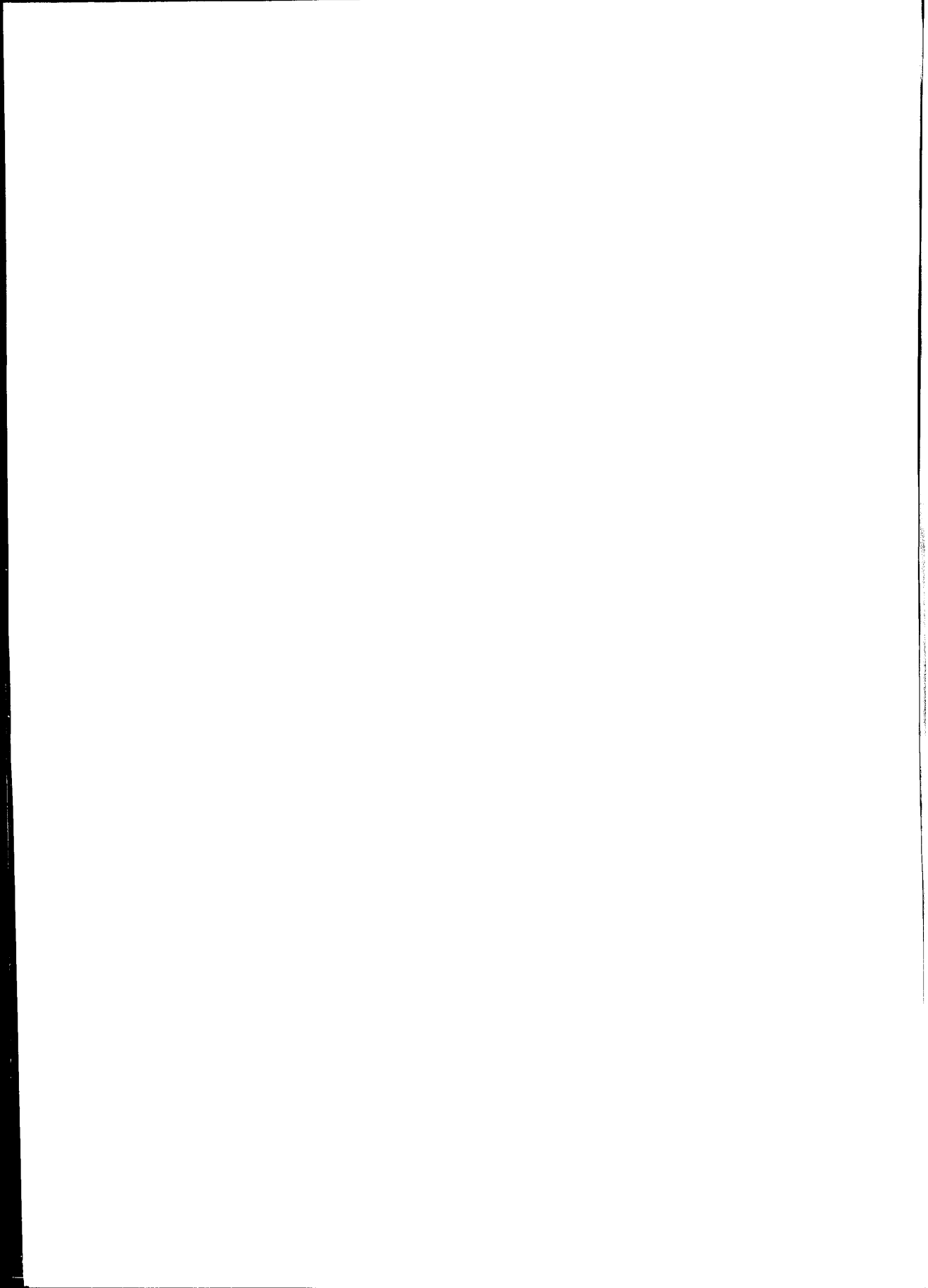
<sup>2</sup> Department of Health (2003), *Resource Allocation: Weighted capitation formula*, 31/05/03, p 8.

<sup>3</sup> For example, Department of Health (2005), *The National Service Framework for Mental Health Five Years On*. Available online at: [http://www.dh.gov.uk/PublicationsAndStatistics/Publications/PublicationsPolicyAndGuidance/PublicationsPolicyAndGuidanceArticle/fs/en?CONTENT\\_ID=4099120&chk=CKJpKk](http://www.dh.gov.uk/PublicationsAndStatistics/Publications/PublicationsPolicyAndGuidance/PublicationsPolicyAndGuidanceArticle/fs/en?CONTENT_ID=4099120&chk=CKJpKk)

<sup>4</sup> Department of Health (2006), *On the state of the public health: Annual report of the Chief Medical Officer 2005*. Available online at:

[http://www.dh.gov.uk/PublicationsAndStatistics/Publications/AnnualReports/CMOAnnualReportsArticle/fs/en?CONTENT\\_ID=4137366&chk=iiXWXk](http://www.dh.gov.uk/PublicationsAndStatistics/Publications/AnnualReports/CMOAnnualReportsArticle/fs/en?CONTENT_ID=4137366&chk=iiXWXk)

<b>KING'S FUND LIBRARY</b> 11-13 Cavendish Square London W1G 0AN	
Class mark H1B1	Extensions Kin
Date of Receipt 4/9/06	Price DOWNLOAD



## Appendix to Local variations in NHS spending priorities

The following table accompanies the King's Fund briefing *Local variations in NHS spending priorities*<sup>1</sup>, published on 9 August 2006. This data has been produced by the King's Fund, based on National Programme Budget Project data and the Department of Health's *Unified exposition book: 2003/04, 2004/05 & 2005/06 PCT revenue resource limits*.<sup>2</sup>

Primary care trust (PCT) spending per head represents actual spending adjusted to reflect differential needs for health care across PCTs (using the aggregate needs index that forms part of the English weighted capitation formulae to calculate 'target' budgets for PCTs) and differences in the costs of providing services (using the Market Forces Factor index that is also part of the weighted capitation formulae for setting PCT budgets). Spending is finally adjusted to take account of the fact that the actual allocations for some PCTs in 2004/5 are either above or below their 'target' budget as determined by the weighted capitation formulae. Over the next few years PCTs will move closer to their target allocations.

**Table 1: Spending (£) per head weighted for need, age, costs and distance from allocation target - primary care trusts in alphabetical order**

Primary care trust (PCT)	Spending per head on cancers and tumours (£)	Spending per head on mental health problems (£)	Spending per head on circulatory problems, including CHD (£)
Adur, Arun And Worthing PCT	63	125	126
Airedale PCT	84	181	127
Amber Valley PCT	87	111	136
Ashfield PCT	59	123	121
Ashford PCT	69	147	134
Ashton, Leigh And Wigan PCT	73	109	135
Barking And Dagenham PCT	75	190	111
Barnet PCT	60	139	116
Barnsley PCT	72	130	132
Basildon PCT	71	157	99
Bassetlaw PCT	79	111	116
Bath And North East Somerset PCT	100	155	144
Bebington And West Wirral PCT	74	159	126
Bedford PCT	69	140	113
Bedfordshire Heartlands PCT	68	136	127
Bexhill And Rother PCT	77	84	159
Bexley Care Trust	81	126	125
Billericay, Brentwood And Wickford PCT	77	154	115
Birkenhead And Wallasey PCT	64	130	123
Blackburn With Darwen PCT	68	123	105
Blackpool PCT	82	139	151
Blackwater Valley And Hart PCT	57	142	112
Bolton PCT	59	113	132
Bournemouth PCT	77	139	133
Bracknell Forest PCT	51	66	83
Bradford City PCT	50	130	74
Bradford South And West PCT	85	139	116
Brent PCT	48	160	105
Brighton And Hove City PCT	65	120	87
Bristol North PCT	79	167	122
Bristol South And West PCT	88	178	127
Broadland PCT	98	173	163
Bromley PCT	83	147	124
Broxtowe And Hucknall PCT	93	111	139
Burnley, Pendle And Rossendale PCT	67	111	120
Burntwood, Lichfield And Tamworth PCT	68	112	120

Primary care trust (PCT)	Spending per head on cancers and tumours (£)	Spending per head on mental health problems (£)	Spending per head on circulatory problems, including CHD (£)
Bury PCT	68	119	81
Calderdale PCT	73	145	120
Cambridge City PCT	94	201	111
Camden PCT	113	242	118
Cannock Chase PCT	53	176	105
Canterbury And Coastal PCT	54	146	110
Carlisle And District PCT	86	152	133
Castle Point And Rochford PCT	82	156	122
Central Cheshire PCT	67	114	137
Central Cornwall PCT	96	114	146
Central Derby PCT	73	167	109
Central Liverpool PCT	51	178	97
Central Manchester PCT	62	161	120
Central Suffolk PCT	87	131	141
Charnwood And North West Leicestershire PCT	66	138	133
Chelmsford PCT	90	125	111
Cheltenham And Tewkesbury PCT	64	98	76
Cherwell Vale PCT	88	130	113
Cheshire West PCT	56	132	109
Chesterfield PCT	78	105	126
Chiltern And South Bucks PCT	59	99	121
Chorley And South Ribble PCT	92	142	112
City And Hackney PCT	41	187	68
Colchester PCT	110	146	112
Cotswold And Vale PCT	110	133	130
Coventry PCT	76	207	112
Craven, Harrogate And Rural District PCT	92	112	115
Crawley PCT	64	140	123
Croydon PCT	60	156	104
Dacorum PCT	92	184	116
Darlington PCT	60	138	130
Dartford, Gravesham And Swanley PCT	65	145	118
Daventry And South Northamptonshire PCT	132	113	114
Derbyshire Dales And South Derbyshire PCT	76	265	128
Derwentside PCT	80	113	124
Doncaster Central PCT	74	101	121
Doncaster East PCT	59	109	116
Doncaster West PCT	70	113	125
Dudley Beacon And Castle PCT	73	148	113
Dudley South PCT	74	103	121
Durham And Chester-Le-Street PCT	80	122	119
Durham Dales PCT	60	180	134
Ealing PCT	66	187	103
Easington PCT	64	125	119
East Cambridgeshire And Fenland PCT	88	132	135
East Devon PCT	117	116	154
East Elmbridge And Mid Surrey PCT	65	141	98
East Hampshire PCT	81	110	141
East Kent Coastal PCT	63	142	125
East Leeds PCT	82	155	131
East Lincolnshire PCT	94	108	145
East Staffordshire PCT	69	120	133



Primary care trust (PCT)	Spending per head on cancers and tumours (£)	Spending per head on mental health problems (£)	Spending per head on circulatory problems, including CHD (£)
East Surrey PCT	61	117	106
East Yorkshire PCT	77	135	131
Eastbourne Downs PCT	72	155	132
Eastern Birmingham PCT	62	125	112
Eastern Cheshire PCT	89	124	144
Eastern Hull PCT	74	148	123
Eastern Leicester PCT	57	151	141
Eastern Wakefield PCT	86	111	114
Eastleigh And Test Valley South PCT	81	152	145
Eden Valley PCT	86	183	131
Ellesmere Port And Neston PCT	74	173	138
Enfield PCT	72	168	103
Epping Forest PCT	77	120	99
Erewash PCT	88	140	109
Exeter PCT	59	153	124
Fareham And Gosport PCT	85	177	124
Fylde PCT	86	136	149
Gateshead PCT	83	160	139
Gedling PCT	91	104	149
Great Yarmouth PCT	106	136	130
Greater Derby PCT	74	140	107
Greenwich PCT	68	181	97
Guildford And Waverley PCT	126	183	98
Halton PCT	50	154	129
Hambleton And Richmondshire PCT	85	108	149
Hammersmith And Fulham PCT	79	197	113
Haringey Teaching PCT	64	223	84
Harlow PCT	86	132	103
Harrow PCT	54	165	137
Hartlepool PCT	54	151	105
Hastings And St Leonards PCT	64	166	134
Havering PCT	84	164	113
Heart of Birmingham Teaching PCT	35	171	81
Herefordshire PCT	61	167	136
Hertsmere PCT	82	207	129
Heywood And Middleton PCT	63	110	146
High Peak And Dales PCT	76	115	150
Hillingdon PCT	62	126	110
Hinckley And Bosworth PCT	78	130	128
Horsham And Chancetonbury PCT	92	150	167
Hounslow PCT	75	179	126
Huddersfield Central PCT	66	151	94
Huntingdonshire PCT	79	92	116
Hyndburn And Ribble Valley PCT	78	156	119
Ipswich PCT	81	173	122
Isle of Wight PCT	72	182	140
Islington PCT	59	259	89
Kennet And North Wiltshire PCT	73	126	123
Kensington And Chelsea PCT	71	187	130
Kingston PCT	100	163	145
Knowsley PCT	78	129	124
Lambeth PCT	72	248	90

Primary care trust (PCT)	Spending per head on cancers and tumours (£)	Spending per head on mental health problems (£)	Spending per head on circulatory problems, including CHD (£)
Langbaugh PCT	76	114	136
Leeds North East PCT	88	187	118
Leeds North West PCT	91	179	122
Leeds West PCT	105	135	147
Leicester City West PCT	63	157	131
Lewisham PCT	70	188	99
Lincolnshire South West Teaching PCT	89	131	134
Luton PCT	52	143	131
Maidstone Weald PCT	121	146	110
Maldon And South Chelmsford PCT	79	120	110
Mansfield District PCT	63	108	117
Medway PCT	86	132	109
Melton, Rutland And Harborough PCT	86	182	126
Mendip PCT	82	130	151
Mid Devon PCT	98	135	140
Middlesbrough PCT	80	139	133
Mid-Hampshire PCT	72	162	142
Mid-Sussex PCT	70	140	143
Milton Keynes PCT	63	133	112
Morecambe Bay PCT	71	139	123
New Forest PCT	90	137	168
Newark And Sherwood PCT	77	149	126
Newbury And Community PCT	73	130	103
Newcastle PCT	88	179	105
Newcastle-Under-Lyme PCT	54	128	129
Newham PCT	50	175	108
North And East Cornwall PCT	84	164	146
North Birmingham PCT	73	126	136
North Bradford PCT	81	119	115
North Devon PCT	75	123	157
North Dorset PCT	68	137	116
North East Lincolnshire PCT	75	112	125
North East Oxfordshire PCT	90	118	127
North Eastern Derbyshire PCT	87	66	129
North Hampshire PCT	68	112	132
North Hertfordshire And Stevenage PCT	61	109	145
North Kirklees PCT	74	146	126
North Lincolnshire PCT	81	148	142
North Liverpool PCT	67	154	133
North Manchester PCT	48	186	101
North Norfolk PCT	94	156	159
North Peterborough PCT	55	77	99
North Sheffield PCT	100	168	139
North Somerset PCT	86	124	165
North Stoke PCT	54	137	117
North Surrey PCT	85	127	136
North Tees PCT	63	124	136
North Tyneside PCT	73	110	115
North Warwickshire PCT	67	123	114
Northampton PCT	75	168	120
Northamptonshire Heartlands PCT	69	147	121
Northumberland Care Trust	94	164	113

Primary care trust (PCT)	Spending per head on cancers and tumours (£)	Spending per head on mental health problems (£)	Spending per head on circulatory problems, including CHD (£)
Norwich PCT	79	209	125
Nottingham City PCT	82	144	107
Oldbury And Smethwick PCT	64	105	127
Oldham PCT	76	115	123
Oxford City PCT	103	194	126
Plymouth PCT	73	144	132
Poole PCT	81	127	127
Portsmouth City PCT	76	172	107
Preston PCT	87	204	95
Reading PCT	88	152	96
Redbridge PCT	80	136	129
Redditch And Bromsgrove PCT	86	99	140
Richmond And Twickenham PCT	68	155	104
Rochdale PCT	60	124	153
Rotherham PCT	65	125	123
Rowley Regis And Tipton PCT	64	126	149
Royston, Buntingford And Bishop's Stortford PCT	69	136	98
Rugby PCT	80	104	120
Rushcliffe PCT	85	130	122
Salford PCT	71	137	125
Scarborough, Whitby And Ryedale PCT	76	121	120
Sedgefield PCT	59	129	113
Selby And York PCT	73	126	135
Sheffield South West PCT	81	143	125
Sheffield West PCT	77	152	116
Shepway PCT	73	145	123
Shropshire County PCT	81	134	120
Slough PCT	55	144	114
Solihull PCT	72	112	131
Somerset Coast PCT	82	119	124
South And East Dorset PCT	90	85	173
South Birmingham PCT	65	169	120
South Cambridgeshire PCT	82	154	117
South East Hertfordshire PCT	69	147	113
South East Oxfordshire PCT	85	127	126
South East Sheffield PCT	78	153	130
South Gloucestershire PCT	59	142	127
South Hams And West Devon PCT	79	139	157
South Huddersfield PCT	82	183	101
South Leeds PCT	85	165	119
South Leicestershire PCT	84	124	151
South Liverpool PCT	50	140	122
South Manchester PCT	82	194	140
South Peterborough PCT	74	116	168
South Sefton PCT	73	177	156
South Somerset PCT	97	112	144
South Stoke PCT	58	136	130
South Tyneside PCT	74	87	132
South Warwickshire PCT	91	103	151
South West Dorset PCT	84	76	140
South West Kent PCT	113	133	111
South West Oxfordshire PCT	87	133	129

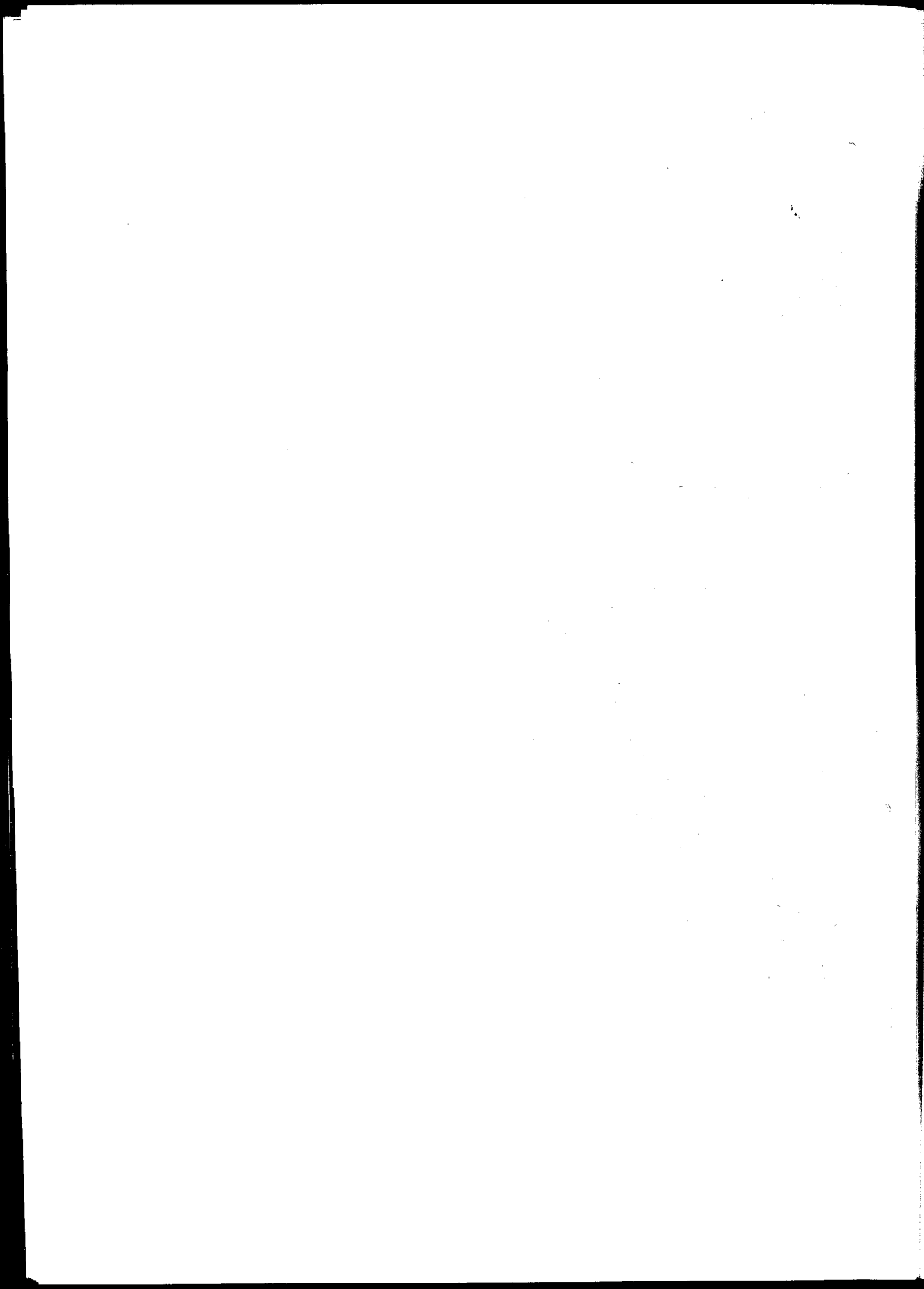
Primary care trust (PCT)	Spending per head on cancers and tumours (£)	Spending per head on mental health problems (£)	Spending per head on circulatory problems, including CHD (£)
South Western Staffordshire PCT	63	148	123
South Wiltshire PCT	87	150	101
South Worcestershire PCT	89	147	144
Southampton City PCT	70	190	124
Southend on Sea PCT	89	195	114
Southern Norfolk PCT	111	132	151
Southport And Formby PCT	54	158	115
Southwark PCT	50	220	81
St Albans and Harpenden PCT	99	127	106
St Helens PCT	68	117	137
Staffordshire Moorlands PCT	64	127	139
Stockport PCT	77	117	143
Suffolk Coastal PCT	85	132	155
Suffolk West PCT	82	136	145
Sunderland Teaching PCT	62	124	117
Surrey Heath and Woking PCT	72	118	125
Sussex Downs And Weald PCT	73	108	137
Sutton And Merton PCT	83	142	102
Swale PCT	80	139	99
Swindon PCT	68	159	119
Tameside And Glossop PCT	66	125	147
Taunton Deane PCT	92	125	127
Teignbridge PCT	90	126	152
Telford And Wrekin PCT	64	154	122
Tendring PCT	96	155	123
Thurrock PCT	61	158	115
Torbay PCT	116	122	128
Tower Hamlets PCT	101	81	89
Trafford North PCT	70	113	145
Trafford South PCT	64	108	135
Uttlesford PCT	89	201	117
Vale of Aylesbury PCT	72	152	119
Wakefield West PCT	91	120	124
Walsall PCT	76	120	125
Waltham Forest PCT	62	122	125
Wandsworth PCT	63	160	103
Warrington PCT	46	180	106
Watford And Three Rivers PCT	104	68	139
Waveney PCT	92	157	125
Wednesbury And West Bromwich PCT	61	114	119
Welwyn Hatfield PCT	66	144	105
West Cumbria PCT	76	147	127
West Gloucestershire PCT	106	149	128
West Hull PCT	80	147	114
West Lancashire PCT	43	128	104
West Lincolnshire PCT	96	153	136
West Norfolk PCT	86	132	140
West of Cornwall PCT	84	135	157
West Wiltshire PCT	67	121	127
Western Sussex PCT	67	130	134
Westminster PCT	54	209	101
Windsor, Ascot And Maidenhead PCT	56	103	110

Primary care trust (PCT)	Spending per head on cancers and tumours (£)	Spending per head on mental health problems (£)	Spending per head on circulatory problems, including CHD (£)
Witham, Braintree And Halstead Care Trust	86	142	106
Wokingham PCT	91	158	104
Wolverhampton City PCT	74	136	122
Wycombe PCT	49	139	93
Wyre Forest PCT	65	88	98
Wyre PCT	90	157	173
Yorkshire Wolds And Coast PCT	79	104	137

<sup>1</sup> [http://www.kingsfund.org.uk/resources/briefings/local\\_variations.html](http://www.kingsfund.org.uk/resources/briefings/local_variations.html)

<sup>2</sup> Available at

[http://www.dh.gov.uk/PolicyAndGuidance/OrganisationPolicy/FinanceAndPlanning/Allocations/AllocationsArticle/fs/en?CONTENT\\_ID=4000344&chk=aevYZP](http://www.dh.gov.uk/PolicyAndGuidance/OrganisationPolicy/FinanceAndPlanning/Allocations/AllocationsArticle/fs/en?CONTENT_ID=4000344&chk=aevYZP)



## Appendix to *Local variations in NHS spending priorities*

The following table accompanies the King's Fund briefing *Local variations in NHS spending priorities*<sup>1</sup>, published on 9 August 2006. This data has been produced by the King's Fund, based on National Programme Budget Project data and the Department of Health's *Unified exposition book: 2003/04, 2004/05 & 2005/06 PCT revenue resource limits*.<sup>2</sup>

Primary care trust (PCT) spending per head represents actual spending adjusted to reflect differential needs for health care across PCTs (using the aggregate needs index that forms part of the English weighted capitation formulae to calculate 'target' budgets for PCTs) and differences in the costs of providing services (using the Market Forces Factor index that is also part of the weighted capitation formulae for setting PCT budgets). Spending is finally adjusted to take account of the fact that the actual allocations for some PCTs in 2004/5 are either above or below their 'target' budget as determined by the weighted capitation formulae. Over the next few years PCTs will move closer to their target allocations.

**Table 2: Spending (£) per head on cancers and tumours, weighted for need, age, costs and distance from allocation target - ordered by spending level**

Primary care trust (PCT)	Spending per head on cancers and tumours (£)
Daventry And South Northamptonshire PCT	132
Guildford And Waverley PCT	126
Maidstone Weald PCT	121
East Devon PCT	117
Torbay PCT	116
South West Kent PCT	113
Camden PCT	113
Southern Norfolk PCT	111
Colchester PCT	110
Cotswold And Vale PCT	110
West Gloucestershire PCT	106
Great Yarmouth PCT	106
Leeds West PCT	105
Watford And Three Rivers PCT	104
Oxford City PCT	103
Tower Hamlets PCT	101
Bath And North East Somerset PCT	100
North Sheffield PCT	100
Kingston PCT	100
St Albans and Harpenden PCT	99
Mid Devon PCT	98
Broadland PCT	98
South Somerset PCT	97
Tendring PCT	96
West Lincolnshire PCT	96
Central Cornwall PCT	96
Cambridge City PCT	94
North Norfolk PCT	94
East Lincolnshire PCT	94
Northumberland Care Trust	94
Broxtowe And Hucknall PCT	93
Taunton Deane PCT	92
Horsham And Chanctonbury PCT	92
Chorley And South Ribble PCT	92
Dacorum PCT	92
Waveney PCT	92
Craven, Harrogate And Rural District PCT	92
Gedling PCT	91

Primary care trust (PCT)	Spending per head on cancers and tumours (£)
Wakefield West PCT	91
Leeds North West PCT	91
Wokingham PCT	91
South Warwickshire PCT	91
Wyre PCT	90
South And East Dorset PCT	90
North East Oxfordshire PCT	90
New Forest PCT	90
Teignbridge PCT	90
Chelmsford PCT	90
Uttlesford PCT	89
Eastern Cheshire PCT	89
Lincolnshire South West Teaching PCT	89
Southend on Sea PCT	89
South Worcestershire PCT	89
East Cambridgeshire And Fenland PCT	88
Erewash PCT	88
Reading PCT	88
Leeds North East PCT	88
Bristol South And West PCT	88
Newcastle PCT	88
Cherwell Vale PCT	88
South Wiltshire PCT	87
South West Oxfordshire PCT	87
Central Suffolk PCT	87
Amber Valley PCT	87
Preston PCT	87
North Eastern Derbyshire PCT	87
Redditch And Bromsgrove PCT	86
Eden Valley PCT	86
Eastern Wakefield PCT	86
West Norfolk PCT	86
North Somerset PCT	86
Melton, Rutland And Harborough PCT	86
Fylde PCT	86
Medway PCT	86
Witham, Braintree And Halstead Care Trust	86
Harlow PCT	86
Carlisle And District PCT	86
Bradford South And West PCT	85
Fareham And Gosport PCT	85
South Leeds PCT	85
North Surrey PCT	85
Hambleton And Richmondshire PCT	85
Suffolk Coastal PCT	85
Rushcliffe PCT	85
South East Oxfordshire PCT	85
Airedale PCT	84
North And East Cornwall PCT	84
Havering PCT	84
West of Cornwall PCT	84
South West Dorset PCT	84
South Leicestershire PCT	84
Bromley PCT	83



Primary care trust (PCT)	Spending per head on cancers and tumours (£)
Sutton And Merton PCT	83
Gateshead PCT	83
South Huddersfield PCT	82
Castle Point And Rochford PCT	82
South Manchester PCT	82
Somerset Coast PCT	82
Hertsmere PCT	82
South Cambridgeshire PCT	82
East Leeds PCT	82
Mendip PCT	82
Blackpool PCT	82
Nottingham City PCT	82
Suffolk West PCT	82
Ipswich PCT	81
East Hampshire PCT	81
Sheffield South West PCT	81
Eastleigh And Test Valley South PCT	81
North Bradford PCT	81
Shropshire County PCT	81
Bexley Care Trust	81
North Lincolnshire PCT	81
Poole PCT	81
West Hull PCT	80
Derwentside PCT	80
Middlesbrough PCT	80
Rugby PCT	80
Durham And Chester-Le-Street PCT	80
Swale PCT	80
Redbridge PCT	80
Bristol North PCT	79
Huntingdonshire PCT	79
Hammersmith And Fulham PCT	79
Bassetlaw PCT	79
Yorkshire Wolds And Coast PCT	79
South Hams And West Devon PCT	79
Maldon And South Chelmsford PCT	79
Norwich PCT	79
Chesterfield PCT	78
Hinckley And Bosworth PCT	78
South East Sheffield PCT	78
Hyndburn And Ribble Valley PCT	78
Knowsley PCT	78
Bournemouth PCT	77
Newark And Sherwood PCT	77
Stockport PCT	77
Bexhill And Rother PCT	77
East Yorkshire PCT	77
Billericay, Brentwood And Wickford PCT	77
Epping Forest PCT	77
Sheffield West PCT	77
Derbyshire Dales And South Derbyshire PCT	76
Walsall PCT	76
Portsmouth City PCT	76
Oldham PCT	76

Primary care trust (PCT)	Spending per head on cancers and tumours (£)
Coventry PCT	76
Scarborough, Whitby And Ryedale PCT	76
West Cumbria PCT	76
Langbaugh PCT	76
High Peak And Dales PCT	76
North Devon PCT	75
Northampton PCT	75
North East Lincolnshire PCT	75
Barking And Dagenham PCT	75
Hounslow PCT	75
Doncaster Central PCT	74
Wolverhampton City PCT	74
Greater Derby PCT	74
South Peterborough PCT	74
Eastern Hull PCT	74
Bebington And West Wirral PCT	74
Ellesmere Port And Neston PCT	74
Dudley South PCT	74
South Tyneside PCT	74
North Kirklees PCT	74
Ashton, Leigh And Wigan PCT	73
Shepway PCT	73
Sussex Downs And Weald PCT	73
Selby And York PCT	73
North Birmingham PCT	73
North Tyneside PCT	73
South Sefton PCT	73
Central Derby PCT	73
Newbury And Community PCT	73
Plymouth PCT	73
Kennet And North Wiltshire PCT	73
Calderdale PCT	73
Dudley Beacon And Castle PCT	73
Eastbourne Downs PCT	72
Isle of Wight PCT	72
Vale of Aylesbury PCT	72
Surrey Heath and Woking PCT	72
Enfield PCT	72
Barnsley PCT	72
Mid-Hampshire PCT	72
Solihull PCT	72
Lambeth PCT	72
Salford PCT	71
Kensington And Chelsea PCT	71
Basildon PCT	71
Morecambe Bay PCT	71
Trafford North PCT	70
Southampton City PCT	70
Lewisham PCT	70
Doncaster West PCT	70
Mid-Sussex PCT	70
East Staffordshire PCT	69
Royston, Buntingford And Bishop's Stortford PCT	69
South East Hertfordshire PCT	69

Primary care trust (PCT)	Spending per head on cancers and tumours (£)
Bedford PCT	69
Northamptonshire Heartlands PCT	69
Ashford PCT	69
Greenwich PCT	68
Blackburn With Darwen PCT	68
Bury PCT	68
Burntwood, Lichfield And Tamworth PCT	68
St Helens PCT	68
North Hampshire PCT	68
Richmond And Twickenham PCT	68
Swindon PCT	68
Bedfordshire Heartlands PCT	68
North Dorset PCT	68
Central Cheshire PCT	67
Western Sussex PCT	67
North Warwickshire PCT	67
Burnley, Pendle And Rossendale PCT	67
West Wiltshire PCT	67
North Liverpool PCT	67
Charnwood And North West Leicestershire PCT	66
Welwyn Hatfield PCT	66
Ealing PCT	66
Huddersfield Central PCT	66
Tameside And Glossop PCT	66
South Birmingham PCT	65
East Elmbridge And Mid Surrey PCT	65
Brighton And Hove City PCT	65
Wyre Forest PCT	65
Dartford, Gravesham And Swanley PCT	65
Rotherham PCT	65
Cheltenham And Tewkesbury PCT	64
Hastings And St Leonards PCT	64
Haringey Teaching PCT	64
Crawley PCT	64
Oldbury And Smethwick PCT	64
Rowley Regis And Tipton PCT	64
Trafford South PCT	64
Staffordshire Moorlands PCT	64
Easington PCT	64
Telford And Wrekin PCT	64
Birkenhead And Wallasey PCT	64
East Kent Coastal PCT	63
Heywood And Middleton PCT	63
Milton Keynes PCT	63
Adur, Arun And Worthing PCT	63
Leicester City West PCT	63
South Western Staffordshire PCT	63
North Tees PCT	63
Mansfield District PCT	63
Wandsworth PCT	63
Central Manchester PCT	62
Waltham Forest PCT	62
Eastern Birmingham PCT	62
Hillingdon PCT	62

Primary care trust (PCT)	Spending per head on cancers and tumours (£)
Sunderland Teaching PCT	62
Herefordshire PCT	61
North Hertfordshire And Stevenage PCT	61
East Surrey PCT	61
Wednesbury And West Bromwich PCT	61
Thurrock PCT	61
Darlington PCT	60
Barnet PCT	60
Croydon PCT	60
Rochdale PCT	60
Durham Dales PCT	60
South Gloucestershire PCT	59
Chiltern And South Bucks PCT	59
Ashfield PCT	59
Exeter PCT	59
Islington PCT	59
Sedgefield PCT	59
Bolton PCT	59
Doncaster East PCT	59
South Stoke PCT	58
Eastern Leicester PCT	57
Blackwater Valley And Hart PCT	57
Cheshire West PCT	56
Windsor, Ascot And Maidenhead PCT	56
Slough PCT	55
North Peterborough PCT	55
Newcastle-Under-Lyme PCT	54
Westminster PCT	54
Southport And Formby PCT	54
Canterbury And Coastal PCT	54
Hartlepool PCT	54
Harrow PCT	54
North Stoke PCT	54
Cannock Chase PCT	53
Luton PCT	52
Central Liverpool PCT	51
Bracknell Forest PCT	51
Halton PCT	50
South Liverpool PCT	50
Southwark PCT	50
Newham PCT	50
Bradford City PCT	50
Wycombe PCT	49
Brent PCT	48
North Manchester PCT	48
Warrington PCT	46
West Lancashire PCT	43
City And Hackney PCT	41
Heart of Birmingham Teaching PCT	35

<sup>1</sup> [http://www.kingsfund.org.uk/resources/briefings/local\\_variations.html](http://www.kingsfund.org.uk/resources/briefings/local_variations.html)

<sup>2</sup> Available at

[http://www.dh.gov.uk/PolicyAndGuidance/OrganisationPolicy/FinanceAndPlanning/Allocations/AllocationsArticle/fs/en?CONTENT\\_ID=4000344&chk=aevYZP](http://www.dh.gov.uk/PolicyAndGuidance/OrganisationPolicy/FinanceAndPlanning/Allocations/AllocationsArticle/fs/en?CONTENT_ID=4000344&chk=aevYZP)

## Appendix to *Local variations in NHS spending priorities*

The following table accompanies the King's Fund briefing *Local variations in NHS spending priorities*<sup>1</sup>, published on 9 August 2006. This data has been produced by the King's Fund, based on National Programme Budget Project data and the Department of Health's *Unified exposition book: 2003/04, 2004/05 & 2005/06 PCT revenue resource limits*.<sup>2</sup>

Primary care trust (PCT) spending per head represents actual spending adjusted to reflect differential needs for health care across PCTs (using the aggregate needs index that forms part of the English weighted capitation formulae to calculate 'target' budgets for PCTs) and differences in the costs of providing services (using the Market Forces Factor index that is also part of the weighted capitation formulae for setting PCT budgets). Spending is finally adjusted to take account of the fact that the actual allocations for some PCTs in 2004/5 are either above or below their 'target' budget as determined by the weighted capitation formulae. Over the next few years PCTs will move closer to their target allocations.

**Table 3: Spending (£) per head on mental health problems, weighted for need, age, costs and distance from allocation target - ordered by spending level**

Primary care trust (PCT)	Spending per head on mental health problems (£)
Derbyshire Dales And South Derbyshire PCT	265
Islington PCT	259
Lambeth PCT	248
Camden PCT	242
Haringey Teaching PCT	223
Southwark PCT	220
Westminster PCT	209
Norwich PCT	209
Coventry PCT	207
Hertsmere PCT	207
Preston PCT	204
Uttersford PCT	201
Cambridge City PCT	201
Hammersmith And Fulham PCT	197
Southend on Sea PCT	195
South Manchester PCT	194
Oxford City PCT	194
Southampton City PCT	190
Barking And Dagenham PCT	190
Lewisham PCT	188
Ealing PCT	187
City And Hackney PCT	187
Leeds North East PCT	187
Kensington And Chelsea PCT	187
North Manchester PCT	186
Dacorum PCT	184
South Huddersfield PCT	183
Eden Valley PCT	183
Guildford And Waverley PCT	183
Melton, Rutland And Harborough PCT	182
Isle of Wight PCT	182
Airedale PCT	181
Greenwich PCT	181
Durham Dales PCT	180
Warrington PCT	180
Hounslow PCT	179
Leeds North West PCT	179
Newcastle PCT	179

<b>Primary care trust (PCT)</b>	<b>Spending per head on mental health problems (£)</b>
Bristol South And West PCT	178
Central Liverpool PCT	178
South Sefton PCT	177
Fareham And Gosport PCT	177
Cannock Chase PCT	176
Newham PCT	175
Ellesmere Port And Neston PCT	173
Broadland PCT	173
Ipswich PCT	173
Portsmouth City PCT	172
Heart of Birmingham Teaching PCT	171
South Birmingham PCT	169
North Sheffield PCT	168
Enfield PCT	168
Northampton PCT	168
Bristol North PCT	167
Central Derby PCT	167
Herefordshire PCT	167
Hastings And St Leonards PCT	166
Harrow PCT	165
South Leeds PCT	165
Northumberland Care Trust	164
North And East Cornwall PCT	164
Havering PCT	164
Kingston PCT	163
Mid-Hampshire PCT	162
Central Manchester PCT	161
Wandsworth PCT	160
Brent PCT	160
Gateshead PCT	160
Bebington And West Wirral PCT	159
Swindon PCT	159
Wokingham PCT	158
Thurrock PCT	158
Southport And Formby PCT	158
Leicester City West PCT	157
Wyre PCT	157
Waveney PCT	157
Basildon PCT	157
Croydon PCT	156
Castle Point And Rochford PCT	156
Hyndburn And Ribble Valley PCT	156
North Norfolk PCT	156
Bath And North East Somerset PCT	155
Richmond And Twickenham PCT	155
Eastbourne Downs PCT	155
Tendring PCT	155
East Leeds PCT	155
Billericay, Brentwood And Wickford PCT	154
Telford And Wrekin PCT	154
South Cambridgeshire PCT	154
Halton PCT	154
North Liverpool PCT	154
Exeter PCT	153

Primary care trust (PCT)	Spending per head on mental health problems (£)
South East Sheffield PCT	153
West Lincolnshire PCT	153
Reading PCT	152
Eastleigh And Test Valley South PCT	152
Carlisle And District PCT	152
Sheffield West PCT	152
Vale of Aylesbury PCT	152
Hartlepool PCT	151
Eastern Leicester PCT	151
Huddersfield Central PCT	151
South Wiltshire PCT	150
Horsham And Chanctonbury PCT	150
West Gloucestershire PCT	149
Newark And Sherwood PCT	149
Eastern Hull PCT	148
Dudley Beacon And Castle PCT	148
South Western Staffordshire PCT	148
North Lincolnshire PCT	148
South East Hertfordshire PCT	147
Bromley PCT	147
Ashford PCT	147
South Worcestershire PCT	147
Northamptonshire Heartlands PCT	147
West Hull PCT	147
West Cumbria PCT	147
Canterbury And Coastal PCT	146
North Kirklees PCT	146
Maidstone Weald PCT	146
Colchester PCT	146
Dartford, Gravesham And Swanley PCT	145
Shepway PCT	145
Calderdale PCT	145
Plymouth PCT	144
Nottingham City PCT	144
Welwyn Hatfield PCT	144
Slough PCT	144
Luton PCT	143
Sheffield South West PCT	143
East Kent Coastal PCT	142
Witham, Braintree And Halstead Care Trust	142
Sutton And Merton PCT	142
South Gloucestershire PCT	142
Blackwater Valley And Hart PCT	142
Chorley And South Ribble PCT	142
East Elmbridge And Mid Surrey PCT	141
Mid-Sussex PCT	140
South Liverpool PCT	140
Bedford PCT	140
Crawley PCT	140
Greater Derby PCT	140
Erewash PCT	140
Morecambe Bay PCT	139
Middlesbrough PCT	139
Swale PCT	139

Primary care trust (PCT)	Spending per head on mental health problems (£)
Wycombe PCT	139
Barnet PCT	139
Bournemouth PCT	139
Bradford South And West PCT	139
South Hams And West Devon PCT	139
Blackpool PCT	139
Darlington PCT	138
Charnwood And North West Leicestershire PCT	138
North Dorset PCT	137
Salford PCT	137
North Stoke PCT	137
New Forest PCT	137
Suffolk West PCT	136
Fylde PCT	136
Bedfordshire Heartlands PCT	136
Redbridge PCT	136
Wolverhampton City PCT	136
South Stoke PCT	136
Great Yarmouth PCT	136
Royston, Buntingford And Bishop's Stortford PCT	136
Mid Devon PCT	135
East Yorkshire PCT	135
West of Cornwall PCT	135
Leeds West PCT	135
Shropshire County PCT	134
Milton Keynes PCT	133
South West Oxfordshire PCT	133
South West Kent PCT	133
Cotswold And Vale PCT	133
Southern Norfolk PCT	132
Suffolk Coastal PCT	132
West Norfolk PCT	132
Medway PCT	132
East Cambridgeshire And Fenland PCT	132
Harlow PCT	132
Cheshire West PCT	132
Central Suffolk PCT	131
Lincolnshire South West Teaching PCT	131
Western Sussex PCT	130
Cherwell Vale PCT	130
Newbury And Community PCT	130
Birkenhead And Wallasey PCT	130
Bradford City PCT	130
Mendip PCT	130
Hinckley And Bosworth PCT	130
Barnsley PCT	130
Rushcliffe PCT	130
Knowsley PCT	129
Sedgefield PCT	129
Newcastle-Under-Lyme PCT	128
West Lancashire PCT	128
North Surrey PCT	127
Poole PCT	127
St Albans and Harpenden PCT	127



Primary care trust (PCT)	Spending per head on mental health problems (£)
Staffordshire Moorlands PCT	127
South East Oxfordshire PCT	127
Teignbridge PCT	126
Selby And York PCT	126
Kennet And North Wiltshire PCT	126
Rowley Regis And Tipton PCT	126
North Birmingham PCT	126
Hillingdon PCT	126
Bexley Care Trust	126
Chelmsford PCT	125
Rotherham PCT	125
Easington PCT	125
Tameside And Glossop PCT	125
Adur, Arun And Worthing PCT	125
Taunton Deane PCT	125
Eastern Birmingham PCT	125
Sunderland Teaching PCT	124
North Somerset PCT	124
Eastern Cheshire PCT	124
Rochdale PCT	124
North Tees PCT	124
South Leicestershire PCT	124
Ashfield PCT	123
North Warwickshire PCT	123
Blackburn With Darwen PCT	123
North Devon PCT	123
Waltham Forest PCT	122
Torbay PCT	122
Durham And Chester-Le-Street PCT	122
Scarborough, Whitby And Ryedale PCT	121
West Wiltshire PCT	121
East Staffordshire PCT	120
Brighton And Hove City PCT	120
Walsall PCT	120
Wakefield West PCT	120
Maldon And South Chelmsford PCT	120
Epping Forest PCT	120
Somerset Coast PCT	119
North Bradford PCT	119
Bury PCT	119
North East Oxfordshire PCT	118
Surrey Heath and Woking PCT	118
Stockport PCT	117
East Surrey PCT	117
St Helens PCT	117
South Peterborough PCT	116
East Devon PCT	116
High Peak And Dales PCT	115
Oldham PCT	115
Central Cheshire PCT	114
Central Cornwall PCT	114
Wednesbury And West Bromwich PCT	114
Langbaugh PCT	114
Trafford North PCT	113

Primary care trust (PCT)	Spending per head on mental health problems (£)
Daventry And South Northamptonshire PCT	113
Derwentside PCT	113
Doncaster West PCT	113
Bolton PCT	113
South Somerset PCT	112
Burntwood, Lichfield And Tamworth PCT	112
Craven, Harrogate And Rural District PCT	112
North Hampshire PCT	112
North East Lincolnshire PCT	112
Solihull PCT	112
Bassetlaw PCT	111
Broxtowe And Hucknall PCT	111
Burnley, Pendle And Rossendale PCT	111
Eastern Wakefield PCT	111
Amber Valley PCT	111
East Hampshire PCT	110
North Tyneside PCT	110
Heywood And Middleton PCT	110
North Hertfordshire And Stevenage PCT	109
Ashton, Leigh And Wigan PCT	109
Doncaster East PCT	109
Sussex Downs And Weald PCT	108
East Lincolnshire PCT	108
Mansfield District PCT	108
Trafford South PCT	108
Hambleton And Richmondshire PCT	108
Chesterfield PCT	105
Oldbury And Smethwick PCT	105
Gedling PCT	104
Yorkshire Wolds And Coast PCT	104
Rugby PCT	104
Windsor, Ascot And Maidenhead PCT	103
South Warwickshire PCT	103
Dudley South PCT	103
Doncaster Central PCT	101
Redditch And Bromsgrove PCT	99
Chiltern And South Bucks PCT	99
Cheltenham And Tewkesbury PCT	98
Huntingdonshire PCT	92
Wyre Forest PCT	88
South Tyneside PCT	87
South And East Dorset PCT	85
Bexhill And Rother PCT	84
Tower Hamlets PCT	81
North Peterborough PCT	77
South West Dorset PCT	76
Watford And Three Rivers PCT	68
Bracknell Forest PCT	66
North Eastern Derbyshire PCT	66

<sup>1</sup> [http://www.kingsfund.org.uk/resources/briefings/local\\_variations.html](http://www.kingsfund.org.uk/resources/briefings/local_variations.html)

<sup>2</sup> Available at [http://www.dh.gov.uk/PolicyAndGuidance/OrganisationPolicy/FinanceAndPlanning/Allocations/AllocationsArticle/fs/en?CONTENT\\_ID=4000344&chk=aevYZP](http://www.dh.gov.uk/PolicyAndGuidance/OrganisationPolicy/FinanceAndPlanning/Allocations/AllocationsArticle/fs/en?CONTENT_ID=4000344&chk=aevYZP)

## Appendix to Local variations in NHS spending priorities

The following table accompanies the King's Fund briefing *Local variations in NHS spending priorities*<sup>1</sup>, published on 9 August 2006. This data has been produced by the King's Fund, based on National Programme Budget Project data and the Department of Health's *Unified exposition book: 2003/04, 2004/05 & 2005/06 PCT revenue resource limits*.<sup>2</sup>

Primary care trust (PCT) spending per head represents actual spending adjusted to reflect differential needs for health care across PCTs (using the aggregate needs index that forms part of the English weighted capitation formulae to calculate 'target' budgets for PCTs) and differences in the costs of providing services (using the Market Forces Factor index that is also part of the weighted capitation formulae for setting PCT budgets). Spending is finally adjusted to take account of the fact that the actual allocations for some PCTs in 2004/5 are either above or below their 'target' budget as determined by the weighted capitation formulae. Over the next few years PCTs will move closer to their target allocations.

**Table 4: Spending (£) per head on circulatory problems (including CHD), weighted for need, age, costs and distance from allocation target - ordered by spending level**

Primary care trust (PCT)	Spending per head on circulatory problems, including CHD (£)
Wyre PCT	173
South And East Dorset PCT	173
South Peterborough PCT	168
New Forest PCT	168
Horsham And Chanctonbury PCT	167
North Somerset PCT	165
Broadland PCT	163
North Norfolk PCT	159
Bexhill And Rother PCT	159
North Devon PCT	157
South Hams And West Devon PCT	157
West of Cornwall PCT	157
South Sefton PCT	156
Suffolk Coastal PCT	155
East Devon PCT	154
Rochdale PCT	153
Teignbridge PCT	152
South Warwickshire PCT	151
Southern Norfolk PCT	151
Blackpool PCT	151
South Leicestershire PCT	151
Mendip PCT	151
High Peak And Dales PCT	150
Rowley Regis And Tipton PCT	149
Fylde PCT	149
Gedling PCT	149
Hambleton And Richmondshire PCT	149
Tameside And Glossop PCT	147
Leeds West PCT	147
Central Cornwall PCT	146
Heywood And Middleton PCT	146
North And East Cornwall PCT	146
Eastleigh And Test Valley South PCT	145
Kingston PCT	145
North Hertfordshire And Stevenage PCT	145
Trafford North PCT	145
East Lincolnshire PCT	145
Suffolk West PCT	145

Primary care trust (PCT)	Spending per head on circulatory problems, including CHD (£)
Eastern Cheshire PCT	144
South Worcestershire PCT	144
Bath And North East Somerset PCT	144
South Somerset PCT	144
Mid-Sussex PCT	143
Stockport PCT	143
North Lincolnshire PCT	142
Mid-Hampshire PCT	142
Eastern Leicester PCT	141
East Hampshire PCT	141
Central Suffolk PCT	141
Isle of Wight PCT	140
Redditch And Bromsgrove PCT	140
Mid Devon PCT	140
West Norfolk PCT	140
South West Dorset PCT	140
South Manchester PCT	140
Watford And Three Rivers PCT	139
Gateshead PCT	139
Broxtowe And Hucknall PCT	139
Staffordshire Moorlands PCT	139
North Sheffield PCT	139
Ellesmere Port And Neston PCT	138
Harrow PCT	137
St Helens PCT	137
Central Cheshire PCT	137
Sussex Downs And Weald PCT	137
Yorkshire Wolds And Coast PCT	137
North Tees PCT	136
Amber Valley PCT	136
North Surrey PCT	136
Langbaugh PCT	136
North Birmingham PCT	136
Herefordshire PCT	136
West Lincolnshire PCT	136
Trafford South PCT	135
Ashton, Leigh And Wigan PCT	135
Selby And York PCT	135
East Cambridgeshire And Fenland PCT	135
Hastings And St Leonards PCT	134
Western Sussex PCT	134
Ashford PCT	134
Durham Dales PCT	134
Lincolnshire South West Teaching PCT	134
North Liverpool PCT	133
East Staffordshire PCT	133
Middlesbrough PCT	133
Charnwood And North West Leicestershire PCT	133
Carlisle And District PCT	133
Bournemouth PCT	132
Plymouth PCT	132
Eastbourne Downs PCT	132
Bolton PCT	132
South Tyneside PCT	132

Primary care trust (PCT)	Spending per head on circulatory problems, including CHD (£)
Barnsley PCT	132
North Hampshire PCT	132
Solihull PCT	131
East Yorkshire PCT	131
East Leeds PCT	131
Luton PCT	131
Eden Valley PCT	131
Leicester City West PCT	131
Great Yarmouth PCT	130
South Stoke PCT	130
Kensington And Chelsea PCT	130
South East Sheffield PCT	130
Darlington PCT	130
Cotswold And Vale PCT	130
North Eastern Derbyshire PCT	129
Redbridge PCT	129
Halton PCT	129
Newcastle-Under-Lyme PCT	129
Hertsmere PCT	129
South West Oxfordshire PCT	129
Derbyshire Dales And South Derbyshire PCT	128
Torbay PCT	128
Hinckley And Bosworth PCT	128
West Gloucestershire PCT	128
West Cumbria PCT	127
Taunton Deane PCT	127
Bedfordshire Heartlands PCT	127
Oldbury And Smethwick PCT	127
Bristol South And West PCT	127
West Wiltshire PCT	127
Airedale PCT	127
South Gloucestershire PCT	127
Poole PCT	127
North East Oxfordshire PCT	127
North Kirklees PCT	126
Bebington And West Wirral PCT	126
Chesterfield PCT	126
Melton, Rutland And Harborough PCT	126
Adur, Arun And Worthing PCT	126
Oxford City PCT	126
Hounslow PCT	126
South East Oxfordshire PCT	126
Newark And Sherwood PCT	126
Waltham Forest PCT	125
East Kent Coastal PCT	125
Walsall PCT	125
Salford PCT	125
Norwich PCT	125
North East Lincolnshire PCT	125
Doncaster West PCT	125
Sheffield South West PCT	125
Surrey Heath and Woking PCT	125
Waveney PCT	125
Bexley Care Trust	125

Primary care trust (PCT)	Spending per head on circulatory problems, including CHD (£)
Knowsley PCT	124
Fareham And Gosport PCT	124
Wakefield West PCT	124
Bromley PCT	124
Southampton City PCT	124
Exeter PCT	124
Derwentside PCT	124
Somerset Coast PCT	124
Shepway PCT	123
Birkenhead And Wallasey PCT	123
Morecambe Bay PCT	123
Rotherham PCT	123
Oldham PCT	123
Kennet And North Wiltshire PCT	123
Tendring PCT	123
Eastern Hull PCT	123
Crawley PCT	123
South Western Staffordshire PCT	123
Wolverhampton City PCT	122
Ipswich PCT	122
Leeds North West PCT	122
Telford And Wrekin PCT	122
Bristol North PCT	122
Rushcliffe PCT	122
Castle Point And Rochford PCT	122
South Liverpool PCT	122
Chiltern And South Bucks PCT	121
Dudley South PCT	121
Doncaster Central PCT	121
Ashfield PCT	121
Northamptonshire Heartlands PCT	121
South Birmingham PCT	120
Burntwood, Lichfield And Tamworth PCT	120
Shropshire County PCT	120
Scarborough, Whitby And Ryedale PCT	120
Burnley, Pendle And Rossendale PCT	120
Rugby PCT	120
Northampton PCT	120
Calderdale PCT	120
Central Manchester PCT	120
Hyndburn And Ribble Valley PCT	119
Durham And Chester-Le-Street PCT	119
Swindon PCT	119
Wednesbury And West Bromwich PCT	119
South Leeds PCT	119
Vale of Aylesbury PCT	119
Easington PCT	119
Dartford, Gravesham And Swanley PCT	118
Camden PCT	118
Leeds North East PCT	118
Mansfield District PCT	117
Sunderland Teaching PCT	117
North Stoke PCT	117
Uttlesford PCT	117

Primary care trust (PCT)	Spending per head on circulatory problems, including CHD (£)
South Cambridgeshire PCT	117
Bassetlaw PCT	116
Barnet PCT	116
Bradford South And West PCT	116
North Dorset PCT	116
Dacorum PCT	116
Sheffield West PCT	116
Doncaster East PCT	116
Huntingdonshire PCT	116
North Bradford PCT	115
Billericay, Brentwood And Wickford PCT	115
Craven, Harrogate And Rural District PCT	115
North Tyneside PCT	115
Thurrock PCT	115
Southport And Formby PCT	115
Southend on Sea PCT	114
Eastern Wakefield PCT	114
Daventry And South Northamptonshire PCT	114
North Warwickshire PCT	114
West Hull PCT	114
Slough PCT	114
Northumberland Care Trust	113
South East Hertfordshire PCT	113
Sedgefield PCT	113
Hammersmith And Fulham PCT	113
Dudley Beacon And Castle PCT	113
Bedford PCT	113
Cherwell Vale PCT	113
Havering PCT	113
Eastern Birmingham PCT	112
Coventry PCT	112
Colchester PCT	112
Milton Keynes PCT	112
Blackwater Valley And Hart PCT	112
Chorley And South Ribble PCT	112
Chelmsford PCT	111
Barking And Dagenham PCT	111
Cambridge City PCT	111
South West Kent PCT	111
Maldon And South Chelmsford PCT	110
Maidstone Weald PCT	110
Windsor, Ascot And Maidenhead PCT	110
Hillingdon PCT	110
Canterbury And Coastal PCT	110
Erewash PCT	109
Central Derby PCT	109
Medway PCT	109
Cheshire West PCT	109
Newham PCT	108
Portsmouth City PCT	107
Nottingham City PCT	107
Greater Derby PCT	107
Warrington PCT	106
St Albans and Harpenden PCT	106

Primary care trust (PCT)	Spending per head on circulatory problems, including CHD (£)
East Surrey PCT	106
Witham, Braintree And Halstead Care Trust	106
Brent PCT	105
Cannock Chase PCT	105
Hartlepool PCT	105
Blackburn With Darwen PCT	105
Newcastle PCT	105
Welwyn Hatfield PCT	105
Croydon PCT	104
Richmond And Twickenham PCT	104
Wokingham PCT	104
West Lancashire PCT	104
Enfield PCT	103
Newbury And Community PCT	103
Wandsworth PCT	103
Ealing PCT	103
Harlow PCT	103
Sutton And Merton PCT	102
South Huddersfield PCT	101
North Manchester PCT	101
South Wiltshire PCT	101
Westminster PCT	101
Lewisham PCT	99
Swale PCT	99
North Peterborough PCT	99
Epping Forest PCT	99
Basildon PCT	99
East Elmbridge And Mid Surrey PCT	98
Royston, Buntingford And Bishop's Stortford PCT	98
Guildford And Waverley PCT	98
Wyre Forest PCT	98
Central Liverpool PCT	97
Greenwich PCT	97
Reading PCT	96
Preston PCT	95
Huddersfield Central PCT	94
Wycombe PCT	93
Lambeth PCT	90
Tower Hamlets PCT	89
Islington PCT	89
Brighton And Hove City PCT	87
Haringey Teaching PCT	84
Bracknell Forest PCT	83
Heart of Birmingham Teaching PCT	81
Southwark PCT	81
Bury PCT	81
Cheltenham And Tewkesbury PCT	76
Bradford City PCT	74
City And Hackney PCT	68

<sup>1</sup> [http://www.kingsfund.org.uk/resources/briefings/local\\_variations.html](http://www.kingsfund.org.uk/resources/briefings/local_variations.html)

<sup>2</sup> Available at

[http://www.dh.gov.uk/PolicyAndGuidance/OrganisationPolicy/FinanceAndPlanning/Allocations/AllocationsArticle/fs/en?CONTENT\\_ID=4000344&chk=aevYZP](http://www.dh.gov.uk/PolicyAndGuidance/OrganisationPolicy/FinanceAndPlanning/Allocations/AllocationsArticle/fs/en?CONTENT_ID=4000344&chk=aevYZP)



King's Fund



54001001373821



80025 75540

